

Tidworth Area Board Police Report July 2017

1. East Community Policing Team

Sector Head:	Inspector Nick Mawson
Sector Deputy:	Sergeant Mark Andrews
Community Coordinator:	Pc Lucy Wileman
Pewsey PCSO:	PCSO Maria Downham & PCSO Natalie Cleife

Hello and welcome to this Community Policing Team report.

Many areas boards are raising the issue that our 101 Call handling for Wiltshire remains below the standards we wish to deliver.

To give context to the current position it is important to understand that there has been a significant shift in the way we manage our demand within the Police Service.

The Community Policing Model recognises that the Police service is being asked to do 'more with less' and helps to address this fact by assessing the demand at the first point of contact. The call handler will assess the threat, harm and risk without necessarily tasking an officer to attend in the first instance. The adage they work to in our Communication Centre is to get it right first time.

As a result of this change in handling we have seen an increase in waiting times for calls to be answered.

However, since we initiated the CPT Model, calls for immediate help have seen an improvement.

It is also important to note that we have engaged in a significant recruitment phase for many roles within the CPT. Police Officers, PCSO, Local Crime Investigators and Prisoner Transport Team members have all been recruited. Where do we find people with the right skills to do these roles? One area is our Communication Centre. These are members of Police Staff who have been trained in aspects of law and have good communication skills. It is not surprising that they then wish to use their training and continue to develop. Consequently recruitment and retention of staff is a challenge, however to reassure you our Communication Centre Leadership team have a well-established rolling recruitment programme in place.

We continue to review and assess where improvements are needed. We are currently exploring solutions including on-line reporting of crime, a more informative website and on-line chat and hope this different access channels will start to be available late summer 2017. We will not solve this issue overnight and are working hard on any problems to deliver the best possible service to those who contact us.



Thank you for your continued support to Wiltshire Police.

Please follow us on:

Twitter <https://twitter.com/wiltshirepolice>

Facebook <https://www.facebook.com/wiltshirepolice/>

Or sign up to Community Messaging <https://www.wiltsmessaging.co.uk/> Our free Community Messaging service will also help keep you updated about policing and crime in your local area.

2. CPT - Current Priorities & Consultation Opportunities:

Current Priorities Tidworth and surrounding areas.

Theft from Motor Vehicles

This priority commenced back on 20th January 2017 At this time we are awaiting all of the Area Board funds to purchase the signs mentioned previously. Following an investigation into a large series of vehicle crimes which was a Community Policing priority, Salisbury CID charged two local men with conspiracy to steal from vehicles. Two brothers were arrested and subsequently charged with the spate of offences between 1st November 2016 and 31st January 2017. They face charges in relation to a total of 104 offences including 71 in Wiltshire and 33 in Dorset. They appeared at Salisbury Magistrates Court on 16th June and were remanded in custody. They are next due to appear at Salisbury Crown Court on 19th July 2017.

Off Road Motorbikes/Vehicles Salisbury Plain

This priority commenced on 24th March, to date 91 actions/patrols have taken place. Officers continue to patrol the area along with members of our Volunteer Scheme. The rural crime team are actively involved and have just undertaken a social media drive to publish the rules of the plain. Further operations are being planned with the MOD, Special Constabulary and RMP.

Burglaries Ludgershall.- Closed

A target patrol was instigated on 20th April following the recent series of burglaries, 16 patrols were actioned. On 6th June the patrol was closed down as there were no reported burglaries for the previous 4 weeks. One person currently remains on Police Bail for the offences.

Richmond Crescent - Closed

Following complaints of anti social behaviour and possible drug use in the wooded area behind Richmond Crescent a patrol started on 16th May. In total 20 patrols were actioned and the patrol closed down on 2nd June. A member of the public also became involved on Social Media, they were contacted by parents who apologised for their children's actions and with this joint effort the issue has now stopped.

New Drove - Closed

On 15th June a member of the public notified us that random nails and screws were being placed on the drive, causing damage to vehicles. A target patrol was instigated with 14 actions/patrols. The reporting person has confirmed that the issue has now stopped following the Police presence and thanked us for our actions. Patrol was closed on 21st June.

Ludgershall Castle - Closed

On 16th May patrols commenced at Ludgershall Castle following complaints from English Heritage about litter and small fires being started. The complaints have since stopped and officers have actioned 34 patrols with no current evidence to support any issues. The patrol was closed down on 26th June 2017.

Wood Park - Closed

On 31st May complaints were received from residents in Wood Park. Anti Social behaviour surveys have been issued to residents. In total 17 actions/patrols have taken place. Some residents of Wood Park were spoken to on 26th June 2017, they confirmed that the issues have decreased and it appears that the youths may have moved elsewhere. They were happy for the patrols to be closed at this time.

Military Sites

On 24th May additional patrols commenced at our local Military sites following recent terrorist attacks. In total 69 patrols have been actioned, these patrols will continue

Recreation Ground & Jubilee Gardens Ludgershall - Agreed 27/06/2017

Following the recent spate of criminal damage, evidence of drug and alcohol use, the NTG decided to instigate this as a new priority for a period of 3 months. There are issues at both locations with anti social behaviour, off road motorbikes being driven across the rec. The caretaker is clearing up evidence of drug and alcohol use along with damage being caused to the play equipment and surrounding furniture on a regular basis.

Crime Prevention Summer Campaign Agreed 27/06/2017

Due to the recent mixture of theft from motor vehicles, theft of pushbikes and some dwelling burglaries, we all agreed for a summer campaign around Crime Prevention to take place. This work will be undertaken by the PCSO's along with other agencies to get the message out.

Neighbourhood Tasking Meeting

This meeting took place on 27th June at Community Centre, Wyle Road. Two new priorities were agreed. One covering issues taking place in the Recreation Ground & Jubilee Gardens Ludgershall. The other being a Crime Prevention Summer campaign.

Media

Maria has agreed to do a regular slot on Castledown Radio & BFBS with Brian Pratt and Marc Read.

Consultations

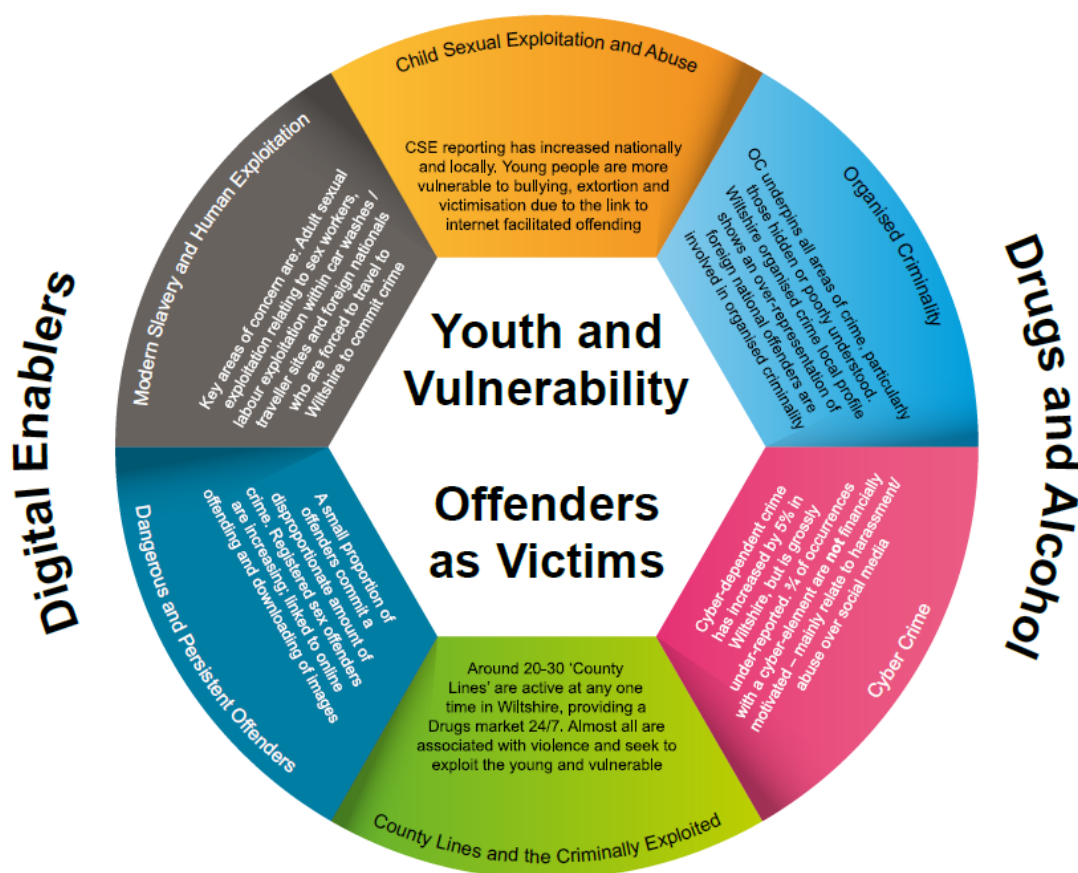
You PCSO's are carrying out consultations on their areas.

Update re Rural Crime Partnership

Rural crime operations continue, in our efforts to target what is often cross border organised criminal activity. Of one particular individual who has been actively involved in hare coursing and trespass on farmland a Community Protection Warning notice has been issued, in addition to seeking out prosecution for the offence itself. We are eager to utilise this legislation for persistent and impactful rural crime incidents.

3. Wiltshire Police Control strategy

Below is our Control Strategy for your reference. This focuses on how we conduct our operational policing based on the Police and Crime Plan. We will continue to align our resources with the threat/harm/risks presented in line with the control strategy.



Child sexual exploitation and abuse

CSEA is high harm but mainly hidden. Children are now more vulnerable to bullying, extortion and victimisation - linked to internet facilitated offending.

Organised criminality

OC underpins all areas of crime, particularly those hidden or poorly understood. In Wiltshire OC is overrepresented by Foreign National Offenders.

Cybercrime

Cyber-crime is grossly under-reported and poorly recorded but growing rapidly. There is now a cyber-element to almost every area of crime.

County Lines and the Criminality Exploited

Almost all drug networks coming into Wiltshire are associated with Violence and seek to criminally exploit the young

Dangerous and Persistent offenders

A small proportion of offenders commit a disproportionate amount of crime. Contributing factors are drugs, alcohol and mental health issues.

Modern Slavery and Human Exploitation

MS is significantly under reported. Key concerns are: Sexual / labour exploitation and foreign nationals who are forced to travel to commit crime.

Domestic Abuse

A third of DA perpetrators are repeat offenders. A quarter of offenders have also been the victim of DA.

Nick Mawson

Sector Inspector,
Wiltshire East CPT